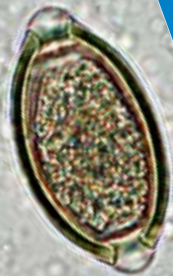


Parasitology



HARDY
DIAGNOSTICS
A Culture of ServiceSM



 Online Ordering Available

020314TR

Parasitology

Table of Contents

- 1 Books
- 2 Parasitology Transports
- 6 Total Fix Procedure
- 7 Fecal Concentrating Systems
- 8 Centrifuge Tubes
- 9 Stains and Reagents
- 11 Staining Accessories
- 12 Control Slides for Stains
- 13 Parasite Suspensions
- 14 Culture Media
- 15 11 Ways to Make a Better Slide
- 17 Microscope Supplies
- 19 Rapid Tests



Headquarters

1430 West McCoy Lane
Santa Maria, CA 93455
800.266.2222 : phone
805.346.2760 : fax
Sales@HardyDiagnostics.com
www.HardyDiagnostics.com

Distribution Centers

Santa Maria, California
Olympia, Washington
Salt Lake City, Utah
Phoenix, Arizona
Dallas, Texas
Springboro, Ohio
Lake City, Florida
Albany, New York
Raleigh, North Carolina

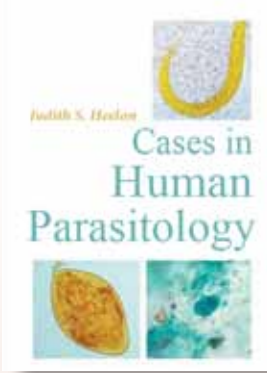


ISO 13485
FM 572526

The Quality Management System at the Hardy Diagnostics manufacturing facility is certified to ISO 13485.

Copyright © 2014 Hardy Diagnostics

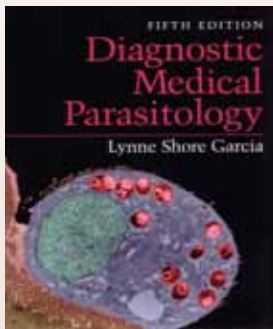
Books



Cases in Human Parasitology

This book contains 62 case studies that focus solely on parasites which adversely affect humans. Challenging cases with details regarding non-parasitic infections whose symptoms closely resemble those of parasitic infections are included.

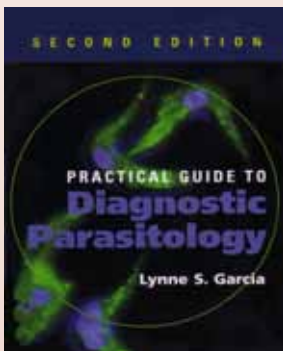
By Judith S. Heelan, 256 pages, softcover, ASM Press, 2004,
Each.....5812961



Diagnostic Medical Parasitology

This book contains updates and advances in the field of diagnostic medical parasitology and reports on the dramatic changes that have occurred in this field. Newly recognized parasites, alternative diagnostic techniques defined by new regulatory requirements, implementation of testing based on molecular techniques, expanded tables and photographs, and new information on parasitic infections are included.

By Lynne S. Garcia, 1,202 pages, color photos, hardcover,
American Public Health Association Publishing, 2007,
Each.....5813802



Practical Guide to Diagnostic Parasitology, 2nd Edition

Designed as a training aid and reference for lab technicians, this guide supplements standard clinical parasitology textbooks by focusing on practical information that has direct application to benchwork. It is also loaded with procedures based on the author's 30 years of hands-on experience in clinical laboratories. This book helps readers perform accurate diagnostic tests and avoid common pitfalls.

By Lynne S. Garcia, 367 pages, softcover, ASM Press, 2009,
Each.....5814540

Parasitology Transports

	Product	Packaging	Cat. no.
SINGLE VIALS	Cu-PVA	100 vials/case	280105
	LV-PVA	100 vials/case	280205
	Z-PVA™ (zinc sulfate modified)	100 vials/case	280305
	UNIFIX	100 vials/case	280405
	C&S Medium	100 vials/case	280505
	Clean Vial	100 vials/case	31005
	SAF	100 vials/case	57405
	Formalin 10%	100 vials/case	57505
	TOTAL-FIX™*	100 vials/case	280705
TWO VIAL SETS	TOTAL-FIX™/Clean*	50 kits/case	89025
	TOTAL-FIX™/C&S*	50 kits/case	89024
	LV-PVA / Clean	50 kits/case	89001
	LV-PVA / Formalin	50 kits/case	89002
	LV-PVA / SAF	50 kits/case	89003
	LV-PVA / C&S	50 kits/case	89004



* PATENT NO. 8,338,130

	Product	Packaging	Cat. no.
TWO VIAL SETS	Z-PVA™ / Clean	50 kits/case	89005
	Z-PVA™ / Formalin	50 kits/case	89006
	Z-PVA™ / C&S	50 kits/case	89007
	SAF / Clean	50 kits/case	89008
	SAF / C&S	50 kits/case	89009
	Cu-PVA / Formalin	50 kits/case	89010
	Z-PVA™ / SAF	50 kits/case	89011
THREE VIAL SETS	TOTAL-FIX™/C & S/Clean	36 kits/case	89117
	LV-PVA / Formalin / C&S	36 kits/case	89101
	LV-PVA / Formalin / Clean	36 kits/case	89102
	Z-PVA™ / Formalin / C&S	36 kits/case	89103
	Z-PVA™ / Formalin / Clean	36 kits/case	89104
	SAF / Clean / C&S	36 kits/case	89105

TOP SELLER



C&S Medium

Culture & Sensitivity medium is recommended for the recovery of *Shigella*, *Salmonella*, *Campylobacter*, and *Vibrio* species. A pH indicator is included to detect acidic conditions which are harmful for the recovery of enteric pathogens. C&S is an aqueous solution of sodium thioglycollate, agar, and inorganic salts (Cary-Blair formula). Fecal immunoassays for *Entamoeba histolytica* or *Entamoeba histolytica* or *E. dispar* group can be performed from this vial. Always check the package insert for any limitations regarding fecal immunoassays and medium/fixative compatibilities.

100/case.....280505

Z-PVA™

Zinc Sulfate PVA mercury-free fixative is an excellent alternative to mercuric chloride PVA for permanent staining. An aqueous solution of low viscosity polyvinyl alcohol, acetic acid, reagent alcohol, and a zinc salt helps to adhere specimen to the slide but has no fixative properties.

100/case.....280305

Modified (Cu) PVA Fixative

Modified copper sulfate PVA is used for permanent staining. This replaces mercuric chloride; an aqueous solution of low viscosity polyvinyl alcohol, acetic acid, reagent alcohol, and cupric sulfate.

100/case.....280105

LV-PVA

LV-PVA (low viscosity polyvinyl alcohol) "Gold Standard" fixative recommended for permanent staining; an aqueous solution of low viscosity polyvinyl alcohol, glycerin, reagent alcohol, and mercuric chloride.

100/case.....280205

Formalin 10%

Fixative recommended for preservation of fecal material is used in concentration, EIA, IFA, DFA, and concentration wet mount procedures.

100/case.....57505

SAF

Sodium acetate, acetic acid, and formalin, mercury-free fixative is recommended for permanent staining, concentration, membrane flow cartridges, EIA, and ELISA procedures. SAF includes albumin adhesive and a buffered solution of formaldehyde in water.

100/case.....57405



* PATENT NO. 8,338,130

4 Parasitology

www.HardyDiagnostics.com
Sales@HardyDiagnostics.com

 **HARDY**
DIAGNOSTICS

800.266.2222

Clean Vial

30ml vial with spork in cap is used when preservatives are not required.

100/case.....31005

TOTAL-FIX™*

The “universal fixative” that contains no formalin, PVA, or mercury can be used for concentration (either flotation or sedimentation), permanent staining (Trichrome, Iron-Hematoxylin, Modified Acid-fast, Modified Trichrome), and fecal immunoassays (EIA, DFA, IFA, Membrane Flow Cartridges) other than those testing for *Entamoeba histolyca*/*E. dispar* group. PVA is not needed with TOTAL-FIX™ if the slides are thoroughly dry before staining. TOTAL-FIX™ is the best choice for a universal and reliable fixative! See following page for procedure.

100/case.....280705

UNIFIX

This is a mercury and formaldehyde-free fixative used for direct examination, permanent staining, concentration, and DFA procedures. UNIFIX can be used with trichrome and iron hematoxylin stains and is compatible with all Medical Chemical Corporation’s fecal concentration systems.

100/case.....280405

Pinworm Paddle

Ideal for the collection of *Enterobius ova* (pinworm eggs) from the perianal region. This paddle is made of clear polystyrene with light adhesive on one side, allowing easy collection of ova. Container is leak proof and can be transported in harsh conditions. With transport vial, sterile, polypropylene, 30ml,

150/case.....V302PIN

Note: For best results, all fecal fixatives should be used in the following ratio:
1 part stool to 3 parts fixative.



Procedure for the Use of TOTAL-FIX™ (Universal Fixative)

1. Specimen vial containing TOTAL-FIX™ and fecal specimen

Ratio of 1/3 stool, 2/3 fixative – MIX WELL.

Allow to fix 30 min before processing.

2. Tube or concentration device

Add approximately 1-2ml fixative/specimen mix to the tube or device.

Mix well prior to pouring into the tube or device.

DO NOT ADD ANY RINSE FLUIDS: Saline, water, formalin.

Rinse fluids will prevent routine permanent staining.

3. Centrifuge

10 min at 500 x g

4. Pour off most of excess fixative.

5. Mix sediment with remaining fixative.

6. Prepare slides for permanent stains; stain slides.

Allow slides to dry for ~30-45 min at 37 °C.

Slides can be placed on trays and put in the incubator.

Room temperature drying requires ~60 min.

7. Add rinse fluid to remaining stool sediment from step 5.

Mix sediment and rinse fluid well before centrifugation.

Proceed with routine concentration procedure.

Single rinse including ethyl acetate step is recommended.

DO NOT ADD ethyl acetate if the specimen contains a lot of mucus.

8. Ring debris layer and pour off excess fluid.

Mix and examine sediment as concentration sediment slide.

Entire 22 x 22mm coverslip: low power (10X objective)

1/3 – 1/2 coverslip: high dry power (40X objective)



Cat. no. 280705

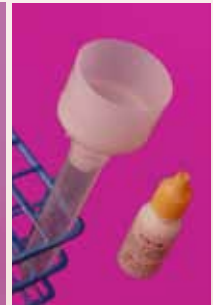
Fecal Concentrating Systems



ParaCon™ Kit, Open System

ParaCon™ fecal concentration kit includes filter/funnels, 15ml centrifuge tubes, caps, and surfactant (Triton® X). This system is designed for concentrating protozoan cysts, oocysts, spores, helminth eggs, and larvae. This methodology is similar to the Ritchie formalin-ether sedimentation concentration procedure. The ParaCon™ filter-funnel device provides a standard and consistent mesh size and allows filtration of fecal material without clogging, by Hardy Diagnostics.

48 tests/kit.....PK48



ParaCon™ Filter Funnels Only

The ParaCon™ filter-funnel device provides a standard and consistent mesh size and allows filtration of fecal material without clogging, by Hardy Diagnostics.

96 funnels/box.....PK96

1,000 funnels/box.....PK1000



ParaCon™ II Kit, Closed System

A complete closed system for concentrating protozoan cysts, oocysts, spores, as well as helminth eggs and larvae. The system is designed to be used in direct connection with 30ml stool transport specimen vials (not included). Supplied with 120 filter cap/centrifuge tube assembly, 50ml, 120 centrifuge tube caps, and 2x15 Triton® X-100 reagent, by Hardy Diagnostics.

120 tests/kit.....PC120

Centrifuge Tubes



15ml Centrifuge Tube

Centrifuge Tube

Blue screw cap, black printed graduations, white printed writing space, non-skirted, racked, sterile.



50ml Centrifuge Tube

Material:

Tube: Polypropylene (PP)
 Cap: High Density Polyethylene (HDPE)
 Spin rate: 8,500 RPM
 Temperature Range: -40°C to +80°C

Centrifuge Tube, Sterile Racked,
 15ml, 50 tubes/rack,
 500/case.....6286
 50ml, 25 tubes/rack,
 500/case.....6289



15ml Centrifuge Tube,
 Sterile, Racked



50ml Centrifuge Tube,
 Sterile, Racked



50ml skirted, Centrifuge
 Tube, Self-Standing

Centrifuge Tube

Blue screw cap, black printed graduations, white printed writing space, non-skirted, bulk packed, non-sterile.

Material:

Tube: Polypropylene (PP)
 Cap: High Density Polyethylene (HDPE)
 Spin rate: 8,500 RPM
 Temperature Range: -40°C to +80°C

15ml, 500/case.....6284
 50ml, 500/case.....6287

Centrifuge Tube, Self-Standing

Tubes are RNase/DNase free, non-pyrogenic, and non-cytotoxic, with writing area. 50ml centrifuge tube, polypropylene with separate red screw cap (HDPE), skirted for self-standing, printed white graduation marks, non-sterile, bulk-packed.

Material:

Tube: Polypropylene (PP)
 Cap: High Density Polyethylene (HDPE)
 Temperature Range: -196°C to +121°C
 Cap: -50°C to +100°C

50ml, 500/case.....6255

Stains & Reagents



Acid Alcohol 0.5%

Acid alcohol decolorizer

32 oz, Each.....AAD32

Acid Alcohol 90%

Acid Alcohol (Ethanol, HCl), a component of the trichrome procedure for parasitology.

32 oz, Each.....3720A32

Carbol Xylene

16 oz, Each.....VXZ016

32 oz, Each.....VXZ032

Cryptosporidium Stain, Modified (Partial)

Acid Fast, also for *Isospora* cold method.

Kinyoun Carbol Fuchsin with Methylene Blue counterstain.

4 x 8 oz bottles.....482K

Kinyoun Carbol Fuchsin with Malachite Green counterstain.

4 x 8 oz bottles.....482KMG

Ethanol 70%

For trichrome and other uses, reagent grade.

32 oz, Each.....VXB032

One gallon, Each.....3716A128

Envirene, Xylene Substitute

An odorless (no citrus smell) non-toxic substitute for xylene or procedures that call for xylene. This substitute is for histology, parasitology, or slide cleaning.

16 oz, EachCE016

Ethyl Acetate

For preparing parasite concentrations.

16 oz, Each.....ET105

Ethanol 95%

Ethanol 95%, Water 5%,

32 oz, Each.....VXC032

One gallon, Each.....3719A128

Iodine Alcohol

For removing mercury deposits in Schaudinn or PVA fixed fecal smears. Iodine alcohol prevents mercury-caused artifacts on slides in Wheatley trichrome staining procedure.

16 oz, Each.....VXI016

One gallon, Each.....VXI128

Iodine, Dobell and O'Connor

A weak iodine solution (diluted Lugol's) is recommended for use in staining protozoan cysts. This preparation is a 1:5 dilution of Lugol's Iodine.

Amber glass bottle, 15ml.....Z66

Mayer's Albumin

Used to adhere fecal specimens to glass slides in the modified iron hematoxylin/Kinyoun or trichrome staining process.

15ml, Each.....Z69





Schaudinn’s Fixative, Modified

Mercury-free and used as an on-slide parasite fixative for fresh fecal smears. Modified Schaudinn’s Fixative is used in Wheatly trichrome stain procedures and prevents distortion of parasitic elements (copper sulfate formula).

- 16 oz, EachVXM016
- 32 oz, EachVXM032

**TOTAL-FIX™ Fixative,
(Schaudinn’s Zinc Fixative)**

A fixative that contains zinc rather than mercury. This product allows you to bypass the iodine step (to remove mercury salts from the fixed specimen and allow penetration of the stain). Contains zinc, but no PVA.

- 16 oz, Each2807A160Z

Trichrome Starter Kit

Volu-Sol’s Trichrome parasitology starter kit (Wheatley’s Procedure) has everything you need to get going. This single, convenient package contains all the materials to prepare stained fecal smears.

The kit contains:

- 8 ounces each of Schaudinn’s Fixative and Trichrome Stain
- 16 ounces each of Carbol Xylene, Xylene, Iodine Alcohol, 70% Ethanol, 95% Ethanol, Acid Ethanol 90%
- 10 reusable Coplin Jars.

Additionally, Hardy sells a refill kit (#VXR010) with all of the above listed items except Coplin Jars.

- Kit..... VXF019

Trichrome Stain, Modified

For staining microsporidia, formulated according to Weber, with aniline blue.

- 16 oz, EachMT016

Trichrome Starter Kit-Refill

- 8 reagents/kit, without jars VXR010

Xylene

Xylene, a component of the trichrome procedure for parasitology. A mixture of ortho, para, and meta dimethylbenzene. (For a non-toxic alternative, see “Envirene.”)

- 16 oz, Each 134B16
- One gallon, Each..... 134B128

Wheatley’s Trichrome Stain

The Wheatley’s trichrome stain is used in the differentiation and rapid staining of intestinal parasites. This kit may also be used as a counter-stain in histological sections when performing the Gomori procedure.

- 16 oz, Each T016
- 32 oz, Each T032

Staining Accessories



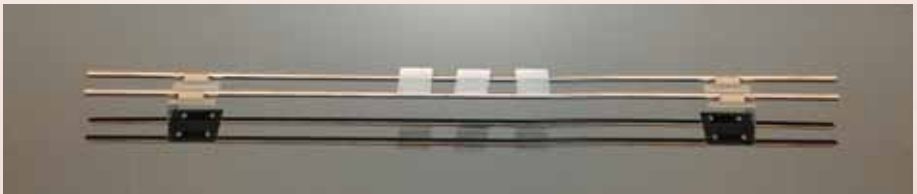
Coplin Jar, Glass

For staining slides, the jar holds five single 3" x 1" slides vertically or 10 slides back-to-back. Screw cap is white, linerless polypropylene, which reduces solvent evaporation. Rectangular base. Holds approximately 60ml. Approximate inside dimensions: 26mm L x 26mm W x 90mm D. Each.....900570



Coplin Jar, Plastic

For manual staining procedures, jars are white plastic with a screw-on top to minimize evaporation. These jars are for use in all staining procedures, with slots on top to eliminate slide contact. Each jar holds 5 slides in upright position or 10 slides back-to-back. Each.....VCJ001

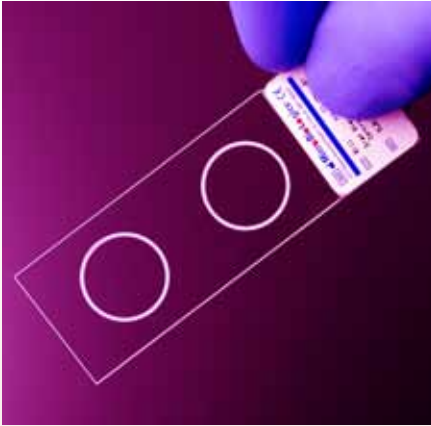


Slide Staining Rack

This stainless steel staining rack is designed for use with laboratory sinks of various sizes. Triangular slide supporting rods have a tapered top and contact the slides only in a narrow zone. Rack can be easily and quickly adjusted to fit sinks up to 53.4cm (21") inside dimensions.

24" wide, Each.....15153821

Control Slides for Stains



Control Slide, Blood Parasite

This quality control slide provides an air-dried, methanol-fixed, blood parasite smear containing *Plasmodium*, *Babesia*, or *Trypanosoma*.

10 slides/box.....SL9010

Control Slide, Intestinal Protozoa, Zinc PVA

Each slide has a single air-dried, Zinc PVA preserved, fecal smear with a representative intestinal protozoa.

10 per box.....SL1010

Control Slide,

Intestinal Protozoa, SAF

Each slide has a single air-dried, SAF preserved fecal smear with a representative intestinal protozoa.

10 slides/box.....SL1510

Control Slide, Cryptosporidium

This quality control slide provides a single air-dried and methanol-fixed fecal smear containing acid-fast-positive *Cryptosporidium* and acid-fast-negative intestinal bacteria.

10 slides/box.....SL4510

Control Slide, *Pneumocystis*

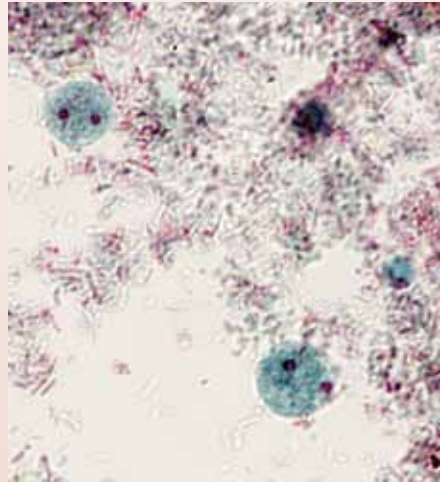
For QC of staining procedures, such as the giemsa or silver nitrate stains. This quality control slide provides a single air-dried and methanol-fixed smear tissue preparation containing *Pneumocystis*.

10 slides/box.....SL7010

Control Slide, Acid-Fast Control Slide

This quality control slide provides two air-dried and methanol-fixed droplets within two etched circles. The circle nearest the label contains a droplet of an acid-fast-positive *Mycobacterium*. The circle furthest from the label contains a droplet of an acid-fast-positive *Cryptosporidium* in a fecal smear sample and contains acid-fast-negative intestinal bacteria.

10 slides/box.....SL4010



Dientamoeba fragilis

Parasite Suspensions for QC

Parasite suspensions are packaged in a vial containing 1 ml of a particular parasite species. Each parasite suspension comes with a Certificate of Performance that includes detailed information about the parasite. Choose from these common organisms below:

Parasitology		
	FP01	<i>Giardia lamblia</i> Parasite Suspension
	FP02	<i>Cryptosporidium</i> species Parasite Suspension
	FP03	<i>Diphyllobothrium latum</i> Parasite Suspension
	FP04	<i>Taenia</i> species Parasite Suspension
	FP05	<i>Ascaris lumbricoides</i> Parasite Suspension
	FP06	<i>Strongyloides stercoralis</i> Parasite Suspension
	FP07	<i>Blastocystis hominis</i> species Parasite Suspension
	FP12	<i>Endolimax nana</i> Parasite Suspension



Features

- Ready-to-use
- Hassle-free packaging
- Room temperature storage
- Certificate of Performance
- Two-year shelf-life
- CE Marked medical IVD

Applications

- QC of diagnostics kits and methods
- Microscopic Examination
- Acid-Fast staining procedures
- Proficiency programs
- Education

Culture Media for Amoeba

Free-Living Amoeba Media

For the detection of *Acanthamoeba* and *Naegleria* species from clinical and environmental samples. Microscopic examination after two to three days reveals the presence of typical “feeding tracks” which are characteristic of *Acanthamoeba* sp. Requires *E. coli* stock culture (not provided) for use in preparing the bacterial lawn on the Non-Nutrient Agar plates.

Acanthamoeba Broth

For maintenance of stock cultures.
16x100mm tube, 5ml fill,
20/pk.....K225

Page’s Saline

Preparation of suspension used to inoculate Non-Nutrient Agar plates.
13x100mm polycarbonate tube,
2ml fill, 20/pk.....R225

Non-Nutrient Agar

Non-Nutrient Agar plate for the detection of free-living amoebae including *Acanthamoeba* and *Naegleria* spp., by Hardy Diagnostics.
15x100mm plate,
10/pk.....G225



Acanthamoeba castellanii showing “feeding tracks” on Non-Nutrient Agar with *E. coli*.

11 Ways to Make a Better Slide

by Lynne S. Garcia, MS, MT, CLS, BLM, FAAM



1 The single most important step in the preparation of a well stained fecal smear is good fixation.

2 Slides should always be drained between solutions. Touch the end of the slide to a paper towel for two seconds to remove excess fluid before proceeding to the next step.

3 Incomplete removal of mercuric chloride (liquid Schaudinn's fixative with PVA) may cause smear to contain highly refractive crystals or granules, which may prevent detection or identification of any organisms present. The 70% ethanol-iodine solution removes the mercury from the slide; the subsequent alcohol rinses then remove the iodine (should be a strong tea color). Thus, when the slide is ready for trichrome staining, both the mercury and iodine have been removed.

4 When using non-mercury based fixatives, the iodine-alcohol step (used for the removal of mercury) and the subsequent alcohol rinses can be eliminated from the procedure. The smears for staining can be pre-rinsed with 70% alcohol and placed in the trichrome stain, or they can be placed directly into the trichrome stain as the first step in the staining protocol.

5 Smears that are predominantly green may be due to the inadequate removal of iodine by the 70% ethanol (steps 3 and 4). Lengthening the time of these steps or more frequent changing of the 70% ethanol will help.

6 To restore weakened trichrome stain, remove the cap and allow the ethanol (carried over on the staining rack from a previous dish) to evaporate. After a few hours, fresh stock stain may be added to restore lost volume. Older, more concentrated stain produces more intense colors and may require slightly longer destaining times (an extra dip). Remember that PVA smears usually require a slightly longer staining time.

7 Although the trichrome stain is used essentially as a "progressive" stain (no destaining is necessary), the best results are obtained by using the stain "regressively" (destaining the smears briefly in acidified alcohol). Good differentiation is obtained by destaining for a very short time (two dips only, approximately 2 to 3 seconds per dip); prolonged destaining results in poor differentiation.

8 It is essential to rinse the smears free of acid to prevent continued destaining. Since 90% alcohol will continue to leach trichrome stain from the smears, it is recommended that after the acid-alcohol is used, the slides be quickly rinsed in 100% alcohol and dehydrated through two additional changes of 100% alcohol.

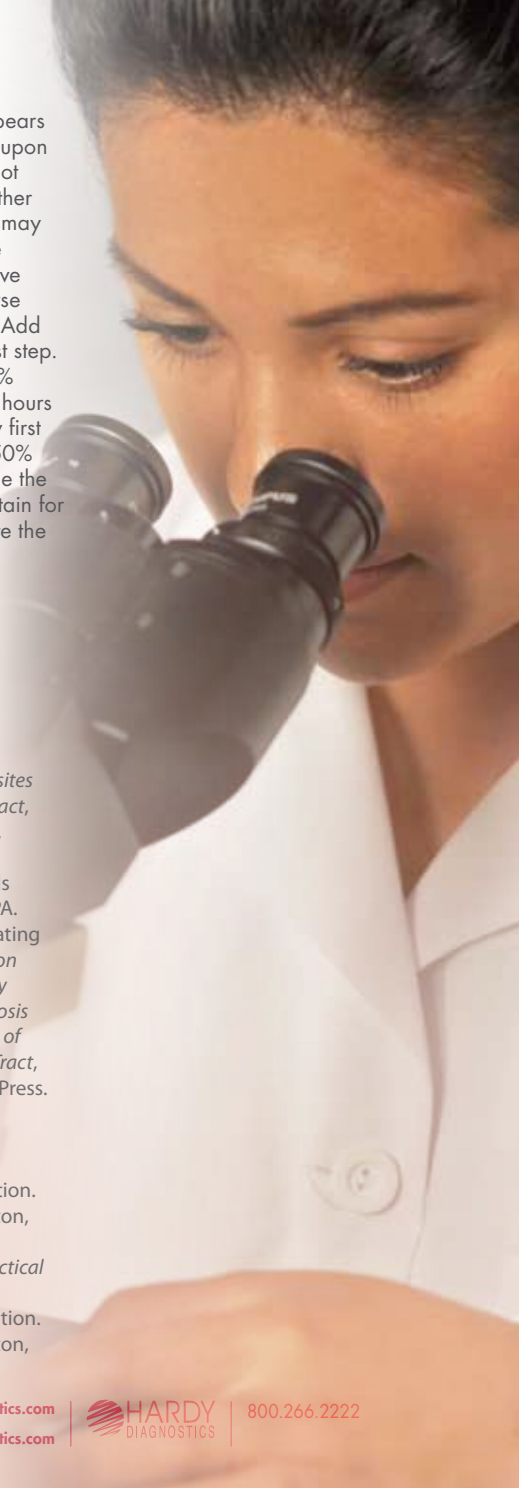
9 In the final stages of dehydration (steps 9 to 11), the 100% ethanol and the xylene (or xylene substitute) should be kept as free from water as possible. Coplin jars must have tight-fitting caps to prevent both evaporation of reagents and absorption of moisture. If the xylene becomes cloudy after addition of slides from the 100% ethanol, return the slides to fresh 100% ethanol and replace the xylene with fresh stock.

10 If the smears peel or flake off, the specimen might have been inadequately dried on the slide (for PVA-fixed specimens), the smear may have been too thick, or the slide may have been greasy (fingerprints). However, slides generally do not have to be cleaned with alcohol prior to use.

11 If the stain appears unsatisfactory upon examination and it is not possible to obtain another slide to stain, the slide may be restained. Place the slide in xylene to remove the coverslip and reverse the dehydration steps. Add 50% ethanol as the last step. Destain the slide in 10% acetic acid for several hours and wash it thoroughly first in water; and then in 50% and 70% ethanol. Place the slide in the trichrome stain for 8 minutes and complete the staining procedure.

References:

1. Clinical Laboratory Standards Institute. 2005. *Procedures For the Recovery and Identification of Parasites From the Intestinal Tract*, Approved Guideline, M28-2A. Clinical Laboratory Standards Institute. Villanova, PA.
2. Garcia, L.S. (Coordinating Editor). 2003. *Selection and Use of Laboratory Procedures for Diagnosis of Parasitic Infections of the Gastrointestinal Tract*, Cumitech 30A. ASM Press. Washington, D.C.
3. Garcia, L.S. 2007. *Diagnostic Medical Parasitology*, 5th Edition. ASM Press. Washington, D.C.
4. Garcia, L.S. 2009. *Practical Guide to Diagnostic Parasitology*, 2nd Edition. ASM Press. Washington, D.C.





Microscope Supplies

Bibulous Blotting Paper

High quality, highly absorbent papers manufactured for minimum linting and shedding. Recommended for drying slides and small parts or components. Bibulous paper, slide blotting paper, non-linting, super-absorbent.



12 books, 50 sheets per book.....28511007

Cover Glass

High quality, borosilicate cover glass is non-corrosive and non-fogging and is devoid of scratches, bubbles, and striations. The flatness provides a uniform distortion free surface. A desiccant is added to each box to ensure that moisture doesn't degrade the cover glass. Convenient plastic storage container allows for easy stacking on the shelf, by Hardy Diagnostics.

18x18mm, 1 oz box.....1818HD
 22x22mm, 1 oz box.....2222HD
 22x40mm, 1 oz box2240HD
 24x40mm, 1 oz box2440HD
 24x50mm, 1 oz box.....2450HD

ProSlide™ Microscope Slides

Single frosted one end on one side. White glass, beveled edges. Available in the super clean and polished premium grade or economy grade. The economy slide is not recommended for hematology use, by Hardy Diagnostics.

3x1 inches x 1mm, 72/box:
 frosted, economyPF72E
 frosted, premium.....PF72P
 plain, economy.....PP72E
 plain, premiumPP72P

Lens Cleaner

An effective microscope lens cleaning solution in a dropper bottle. Safe to use on the most delicate optics. Use with lens tissue, Cat. no. 52846001, by Hardy Diagnostics.

30ml, Each.....Z97

Lens Paper, Non-linting

For cleaning microscope lenses, safety glasses, goggles, and more with no scratching. Dust-free lens paper tissues are ideal for use with liquid cleaners.

4x6 inches, 50 sheets/pk, 12/pks.....52846001

Immersion Oil

Used to assist in microscopic examination at high power by increasing the resolving power, by Hardy Diagnostics.

Low Viscosity

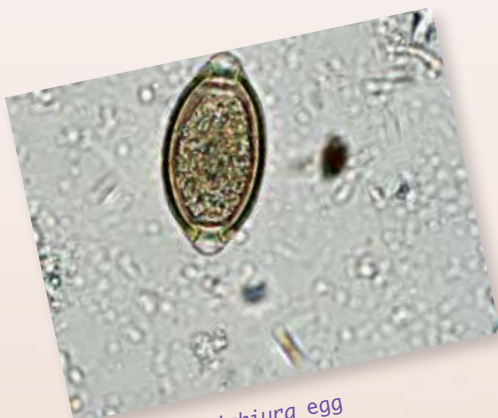
Type A, 20ml, Each Z95

Type A, 4 oz, Each Z85

High Viscosity

Type B, 20ml, Each Z96

Type B, 4 oz, Each Z86



Trichuris trichiura egg



Hookworm egg



Taenia solium egg

Rapid Tests

PARA-TECT™ Cryptosporidium/ Giardia Direct Fluorescent Assay

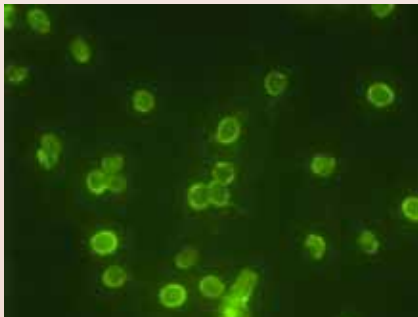
This direct fluorescent assay (DFA) is an *in vitro* immunoassay for the qualitative determination of *Cryptosporidium* and *Giardia* oocysts and cysts in feces. Can be used with stools preserved in 10% formalin, SAF, or TOTAL-FIX™ Universal Fixative, results in 60 minutes.

75 tests.....MCCCG75

PARA-TECT™ Giardia lamblia Antigen Detection

This microwell ELISA test is an *in vitro* immunoassay for the qualitative determination of *Giardia* antigen in feces. It is a double antibody (sandwich) ELISA using an anti-giardia antibody to capture the antigen from the stool supernatant. A second anti-giardia antibody is then added, which sandwiches the captured antigen. This reaction is visualized by the addition of an anti-second antibody conjugated to peroxidase and the chromogen tetramethylbenzidine (TMB). The resulting blue color development indicates the presence of *Giardia* antigens being bound by the anti-giardia antibodies. Results in 45 minutes with a sensitivity of 5-10 ng/ml *Giardia*.

96 tests.....MCCGA96



Cryptosporidium parvum. Obtained from the EPA Microbiology site. Image credit: EPA/H.D.A. Lindquist

ImmunoCard STAT!®, Cryptosporidium/ Giardia

A rapid immunoassay for the qualitative detection of *Cryptosporidium parvum* and *Giardia lamblia* specific antigens in aqueous extracts of fecal specimens. It is intended for *in vitro* diagnostic use as an aid in the detection of suspected *Cryptosporidium* or *Giardia* infections.

30 tests.....750830



InPouch™ TV (*Trichomonas vaginalis* Test)

This unique transport and test system is suitable for hospital and outpatient clinics. It decreases labor time with two procedures combined into one test. An accurate system for the detection of *Trichomonas vaginalis* in both male and female. Pouch fits into a plastic frame that is laid on the microscope stage. Organisms can be viewed directly in the pouch under the microscope, without slide preparation. It contains a highly selective medium for *T. vaginalis*, which facilitates early detection of infection and detects fewer numbers of organisms than other competitive methods. Patient receives treatment more quickly. Less severe infections are readily detected. One year shelf life from date of manufacture, pouch for *Trichomonas vaginalis*, 10 tests.....102010
Plastic clips for microscope stage, 12/box.....142205
Live culture (positive control),
Each.....102015

InPouch™ TF-Bovine, for *Trichomonas foetus*

Trichomonas foetus in cattle is a sexually transmitted infection associated with aborted calves, low birth weight, or delayed calving, which can result in decreased herd yields of 8-29%. Infected bulls are asymptomatic, long-term carriers; their infection rates are 6-8% but have been found as high as 44% in some rangeland areas of the western US. Bovine trichomoniasis is caused by the flagellate protozoan *Trichomonas foetus*.

- Used for the detection of non-specific trichomonads in bovines, *Trichomonas gallinae* in avian, and *T. suis* in swine
- Requires less hands-on time than wet mount
- Two procedures (culture and identification) combined into one test
- No expensive equipment required
- One year room temperature shelf life to reduces storage cost
- Testing made easy
- Suitable for in-the-field testing
- No slide preparation required
- Innovative packaging increases convenience

100 tests.....111003

InPouch™ TF-Feline, for *Trichomonas foetus*

Trichomonas foetus in felines is a protozoan infection of the large intestine which can lead to prolonged and intractable diarrhea. Recent studies have shown that *T. foetus* infects approximately 31% of cats.

Frequently, cats are co-infected with *Giardia*, or, because *T. foetus* and *Giardia* appear similar, cats are misdiagnosed with *Giardia*. When a cat diagnosed with *Giardia* fails to respond to treatment, it is recommended that the cat be tested for *T. foetus*.

InPouch™ TF-Feline is a culture and identification system that can detect infection by a single trichomonad. The specialized medium allows for maximum growth of trichomonads while inhibiting the growth of yeast, mold, and bacteria. One year shelf life from the date of manufacture.

- Suitable for in-the-field testing
- No slide preparation required
- Reagents stored at room temperature
- Innovative Packaging
- Unique transport and test system
- Wet mount and culture in one system

Two procedures are combined into one test (culture and identification).

5 tests.....111107



Mast Toxoreagent™, Rapid Latex Agglutination Test Kit

Toxoreagent™ kit is an indirect latex agglutination test for the detection of toxoplasma antibody. This simple, easy-to-use kit has a positive result indicated by an obvious agglutination pattern after 12 hours. Kit detects both toxoplasma IgM and IgG with all reagents and positive control provided. Reliable results with a high degree of specificity, which reduces false negatives. Suitable for all types of users and easily integrated into your existing laboratory routine. 50 tests.....RST701

Merifluor®, Crypto/Giardia

Merifluor® is an in vitro direct immunofluorescent detection procedure for the simultaneous detection of Cryptosporidium oocysts and Giardia cysts in fecal material. Requires just 30 minutes to complete the test. Bright apple-green fluorescence of the parasite against red-orange background makes rare organisms easy to see. 50 tests.....250050



For a complete listing of Microscope Supplies, please refer to our General Lab Supplies Catalog or scan.





A Culture of Service™

1430 West McCoy Lane

Santa Maria, CA 93455

www.HardyDiagnostics.com | Sales@HardyDiagnostics.com

Distribution Centers: California | Washington | Utah | Arizona

Ohio | Texas | New York | Florida | North Carolina

