



# Rapid Tests and Reagents

Microbiology Time Saving Tests



Online Ordering Available

# Rapid Tests & Reagents



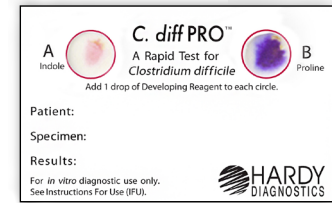
**AlbiQuick™**, for *Candida albicans*, Cat. no. Z121



**Beta Lactamase Test**, Cat. no. Z51



**BlueMount™**, Cat. no. Z137



**C. diff PRO™**, Cat. No. Z120



*Cryptococcus neoformans* positive reaction on Caffeic Acid Disks, Cat. no. Z118

**ALA HardyDisks™**  
Delta-aminolevulinic acid for detection of porphyrin in *Haemophilus* spp.  
50 disks/cartridge.....Z7081

**AlbiQuick™**  
A rapid five minute enzymatic card test to aid in the identification of *Candida albicans*.  
25 tests.....Z121

**Anaerobe Identification**  
See *Bile, Catalase 15%, Colistin, Kanamycin, Nitrate, SPS, and Vancomycin Disks*

**Anginosis**  
See *Rapid Anginosis*

**Bacillus ID Panel**  
For the identification of *Bacillus* spp. and related genera, Microgen®.  
20 tests/kit..... MID66

**Bacitracin, HardyDisks™**  
For the differentiation of Group A Strep, 0.04 Units (A disk).  
1x50 disks/cartridge.....Z7021  
5x50 disks/cartridge.....Z7025

**Bacteroides**  
See *Bile Disk and Nitrocef*

**Beta-Lactamase**  
An acidometric easy-read-out, color change reaction method for the detection of beta-lactamase in bacteria.  
20 tests..... Z51

**Beta-Lactamase, Chromogenic**  
See *Nitrocef*

**Bile, HardyDisks™**  
To aid in the identification of *Bacteroides fragilis* group on the basis of bile resistance.  
50 disks/cartridge ..... Z7091

**Bile, SpotDrops™**  
Deoxycholate 10%, bile solubility test for *Streptococcus pneumoniae*.  
15ml, each..... Z61

**Blank, HardyDisks™**  
Blank paper disks for the addition of antimicrobials or as a reaction surface, 0.25 inch diameter.  
50 disks/cartridge .....Z7121

**BlueMount™**  
A permanent mounting fluid and preservative that contains the stain lactophenol cotton blue.  
15ml, each ..... Z137

**Butyrate**  
See *CatScreen™*

**Bovine Serum Albumin, 0.2%**  
For the preparation of AFB specimens, and for the growth promotion of AFB cultures.  
20x3ml ..... Z81

**C. diff PRO™**  
Test Kit C. diff PRO™ Card is recommended for use in screening suspected *Clostridium difficile* isolates for L-proline aminopeptidase activity and a lack of indole activity.  
25 tests/kit ..... Z120

**Caffeic Acid Disk**  
A rapid test to detect the ability of an organism to produce the enzyme phenyloxidase; useful for the identification of *Cryptococcus neoformans* and *Cryptococcus gattii*.  
25 disks/vial ..... Z118



**Headquarters**

1430 West McCoy Lane  
Santa Maria, CA 93455  
800.266.2222 : phone  
Sales@HardyDiagnostics.com  
www.HardyDiagnostics.com

**Distribution Centers**

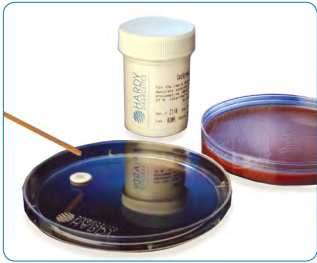
Santa Maria, California  
Olympia, Washington  
Salt Lake City, Utah  
Phoenix, Arizona  
Dallas, Texas

Springboro, Ohio  
Lake City, Florida  
Albany, New York  
Raleigh, North Carolina



ISO 13485  
FM 572526

The Quality Management System at the Hardy Diagnostics manufacturing facility is certified to ISO 13485.



CatScreen™, Cat. no. Z110

### CAMP Spot Test

A liquid reagent for the CAMP reaction, for Group B streptococci.  
2ml cryogenic vial,  
1ml fill, 20 vials/box.....Z206

### Campylobacter

See *Indoxyl Acetate, Hippurate Test, Campylobacter Latex Test, and Microgen®*

### Campylobacter Latex

Rapid latex agglutination slide test for enteropathogenic *Campylobacter* grown from selective media.  
50 tests/it ..... F46

### Candida albicans

See *AlbiQuick™ and Germ Tube Cryo™*

### Candida glabrata

See *Trehalose, Rapid*

### Catalase, 3%

Hydrogen peroxide 3%, detects catalase activity.  
15ml, each .....Z62  
60ml, each ..... Z76

### Catalase, 15%

Hydrogen peroxide 15%, detects bacterial catalase activity in anaerobes.  
15ml, each .....Z262



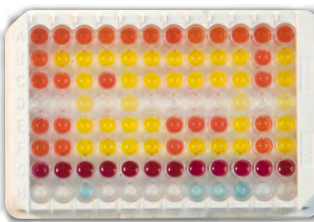
Coagulase Cryo™, Cat. No. Z202

### CatScreen™

Rapid test for the detection of the enzyme butyrate esterase in bacteria isolated on culture media for the presumptive identification of *Branhamella (Moraxella) catarrhalis*. Performs a butyrate test within 5 minutes. Simply moisten disk, inoculate with organism, then wait for the development of a red color.  
25 disks tests/pack .....Z110

### CarboFerm™

For rapid identification of *Neisseria gonorrhoeae*, *Neisseria meningitidis*, *Moraxella catarrhalis*, and other *Neisseria* spp. Results available in 2-4 hours with easy-to-read color change. Includes interpretation guide and results pad.  
24 tests..... Z98



CarboFerm™, Cat. no. Z98



CoaguStaph™, Cat. no. Z003

### Cefinase

See *Nitrocef*

### Clostridium difficile Latex

*Clostridium difficile* Latex agglutination slide test from culture, by Microgen®.  
50 tests/kit..... M41

### Coagulase Cryo™

A ready-to-use vial of frozen coagulase rabbit plasma with EDTA (Ethylenediaminetetraacetic acid) for identification of *Staphylococcus aureus*, 0.5ml.  
20 tests..... Z202

### CoaguStaph™

A lyophilized preparation of coagulase rabbit plasma with EDTA (Ethylenediaminetetraacetic acid) for the identification of *Staphylococcus aureus*.  
6x3ml ..... Z003  
6x20ml..... Z020

### Colistin HardyDisks™, 10µg

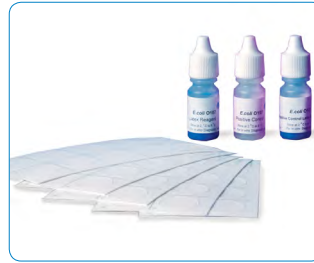
For the differentiation of anaerobic bacteria based on susceptibility to colistin.  
50 disks/cartridge.....Z8411

### Corynebacterium jeikeium

See *RSU Broth*

### Cryptococcus Test

See *India Ink and Caffeic Acid Disks*



E. coliPRO™ 0157 Latex, Cat. no. PL070HD

### Decontamination

See *TB Prep Kit™ and MucoGes™*

### E. coli O157 Dryspot

A latex slide agglutination screening test for the identification of *E. coli* strains possessing the O157 serogroup antigen.  
120 tests.....DR0120M

### E. coli

See *ColiScreen™, MUG, Indole, VET-RPLA, and VTEC RPLA*

### E. coliPRO™ 0157 Latex

A rapid latex agglutination test kit for the identification of *E. coli* O157. It uses proprietary antibodies that eliminate the possibility of cross-reactions with *Escherichia hermannii* and other sorbitol-negative *Escherichia* species.  
50 tests..... PL070HD

### Enterococcus

See *Rapid MGP and PYR*

### EnteroScreen 4™

Enables the screening of enteric pathogens from plated stool specimens, and the differentiation of *Salmonella* and *Shigella* from normal enteric flora in one tube.  
16x125mm tube,  
20 tubes/bx..... L225



GlabratorQuick™ Kit, Cat. no. Z298

### Ferric Chloride, 10%

Developer for tryptophan and phenylalanine deaminase tests.  
15ml, each.....Z63

### Filter Paper

Round, 9cm diameter, ideal for spot oxidase and indole tests.  
100 sheets ..... 28310048

### Flagella Stain

Stain for bacterial flagella.  
15ml, each.....Z87

### Gardnerella vaginalis

See *Hippurate Test, Metronidazole, and Sulfonamide*

### Germ Tube Cryo™

A ready-to-use frozen vial with serum for *Candida albicans* germ tube test, 0.5ml.  
20 vials/pk .....Z217



Germ Tube Cryo™, Cat. no. Z217



EnteroScreen 4™, Cat. no. L225

### GlabratorQuick™

For the rapid identification of *Candida glabrata* by sugar fermentation.  
24 tests/kit.....Z298

### Gram Negative, Microgen®

These accurate, easy-to-use identification panels are ideal for food, environmental, clinical, and pharmaceutical laboratories. Presented in convenient microwell format, these panels provide a flexible identification platform.

- Convenient substrate identification system for commonly encountered bacteria
- Results in as little as 24 hours
- Vivid color reactions for easy read-out
- No additional equipment is required
- Simple inoculation procedure
- Identification software included

Gram Negative Bacteria Identification, Panel A, is AOAC approved. Identifies the most common bacteria isolates.  
60 tests/kit..... MID64

### Gram Test

See *LanaGram™*



Indole Broth, Rapid,  
Cat. no. Z23

### Haemophilus spp.

See ALA Disks, Indole Rapid,  
and XV Factor Disks

### Helicobacter pylori

See Urea Medium, Rapid

### Hippurate

Rapid tube test kit for the  
detection of hippurate  
hydrolysis; ninhydrin included.  
Useful for identification of  
*Campylobacter*, *Gardnerella  
vaginalis*, and *Listeria*.  
20 tests..... Z52

### India Ink

Negative stain for capsule de-  
tection in *Cryptococcus neofor-  
mans* and *Cryptococcus gattii*.  
15ml, each .....Z64

### Indole, Kovac's

Benzaldehyde indole test to be  
performed in tubes, cupules, or  
on identification strips.  
15ml, each ..... Z67

### Indole, Rapid

For the detection of indole  
production by fastidious  
microorganisms, especially  
*Haemophilus* spp.,  
*Cardiobacterium* spp.,  
*Suttonella* spp., and other  
fastidious bacteria.  
5ml, 10/pk ..... Z23



Iodine, Dobell and O'Connor,  
Cat no. Z66

### Indole, DMACA

Cinnamaldehyde reagent for  
performing rapid indole test on  
filter paper.  
15ml, each .....Z65

### Indoxyl Acetate, HardyDisk™

A rapid test to aid in  
identification of *Campylo-  
bacter*, *Wolinella*, and  
*Helicobacter* spp.  
25 disks..... Z111

### Iodine, Dobell and O'Connor

Iodine stain for parasite ova  
and cysts in fecal wet mounts.  
15ml, each .....Z66

### Iodine-Iodide Solution

For use with Tetrathionate Broth,  
Cat. no. K65.  
50ml, each ..... Z129  
1 liter polycarbonate bottle,  
990ml fill, each.....Z139

### KOH with DMSO

See *Soluphyte*™

### KOH, 10%

Potassium hydroxide for fungal  
wet mounts.  
15ml, each .....Z77

### KOH, 20%

Potassium hydroxide for skin  
fungal preps.  
15ml, each .....Z78



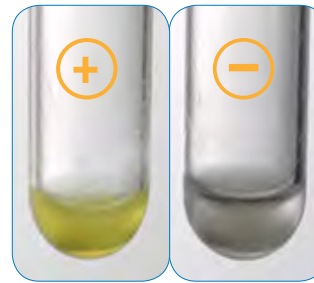
Indoxyl acetate disks, Cat.  
no. Z111. Showing positive  
(left disk) and negative  
(right disk) reactions.

### Kanamycin, HardyDisks™

Differentiates anaerobic  
bacteria on the basis of  
susceptibility to kanamycin.  
1000µg,  
50 disks/cartridge.....Z7191

### LAP

Intended for the preliminary  
identification of catalase-  
negative and Gram-positive  
cocci. LAP positive organisms  
include *Pediococci*, *Lactococci*,  
*Enterococci*, *Streptococcus  
pneumoniae*, and *Strepto-  
coccus pyogenes*; while other  
β-hemolytic streptococci,  
*Aerococcus* and *Leuconostoc*  
species are LAP negative.  
The disks are impregnated  
with leucine-β-naphthylamide,  
which can be hydrolyzed  
by the enzyme leucine  
aminopeptidase produced by  
some organisms.  
3ml PYR reagent and LAP disks,  
25 disks.....DL10K



LanaGram™ for Gram Reaction  
Right: *E coli* suspended in  
three drops of deionized  
water with a LanaGram™ Disk.  
Left: *Bacillus subtilis*  
suspended in three drops  
of deionized water with a  
LanaGram™ Disk.

### Lactophenol Cotton Blue

Stain for fungal wet mounts,  
also see BlueMount™.  
15ml, each .....Z68

### LanaGram™

A rapid enzymatic test to assist  
in the determination of the  
Gram reaction in difficult to  
stain bacteria.  
15 tests .....Z49

### Lead Acetate Strips (H<sub>2</sub>S)

Detects hydrogen sulfide  
production for the identification  
of *Enterobacteriaceae*.  
30 strips/vial..... K375

### Legionella Latex

A rapid latex slide  
agglutination test for identifying  
*Legionella pneumophila* grown  
on selective medium.  
50 tests per kit .....M45



Lysostaphin Test,  
Cat. no. Z112

### Legionella DFA Test

For the detection and  
identification of *Legionella  
pneumophila* serogroups.  
The kit is supplied complete  
with *Legionella pneumophila*  
serogroup 1 DFA reagent,  
positive and negative controls,  
and mounting medium.  
50 tests.....PL241

### Legionella, in Urine

A visual read out, *in vitro*  
immunochromatographic rapid  
assay for the presumptive  
qualitative detection of  
*Legionella pneumophila*  
serogroup 1 antigens in human  
urine. This test is intended  
to aid in the presumptive  
diagnosis of Legionnaires'  
disease in conjunction with  
culture and other methods  
for patients with signs and  
symptoms of pneumonia.  
20 tests.....044020

### Listeria Latex

A latex agglutination slide  
test for the identification of  
motile *Listeria* spp. from solid  
selective media.  
50 tests/kit..... F48



Mayer's Albumin, Cat. no. Z69

### Listeria ID Panel

An extended battery of tests to  
assist in identifying the more  
esoteric bacterial isolates.  
20 tests/kit.....MID67

### Lysostaphin

A rapid test that differentiates  
between *Micrococcus* spp. and  
*Staphylococcus* spp., results  
within two hours.  
50 disks/vial.....Z112

### Mayer's Albumin

For better specimen adhesion  
on slides, especially for  
O&P trichomes.  
15ml, each .....Z69

### Methyl Red

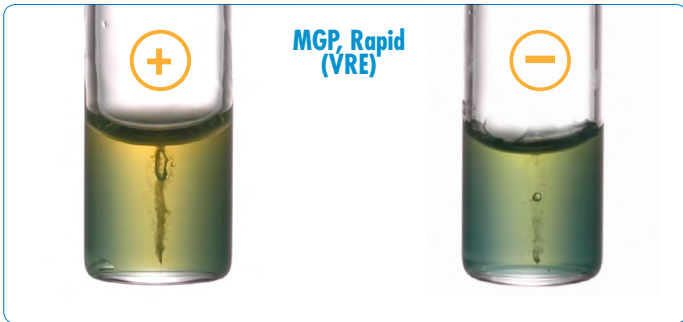
Developer reagent for the  
Methyl Red test.  
15ml, each .....Z117

### Methylene Blue, Loeffler's

General purpose bacterial  
stain, and for fecal leukocytes.  
15ml, each .....Z88

### Metronidazole Disks

For differentiation of  
bacteria by susceptibility to  
metronidazole (especially  
*Gardenerella vaginalis*).  
50 disks.....DD8



**MGP, Rapid (VRE)**

*Enterococcus gallinarum* (ATCC® 49573) growing in Rapid MGP Medium (Cat. no. Z225). Yellow color change along the stab line is indicative of a positive MGP test.

*Enterococcus faecalis* (ATCC® 29212) growing in Rapid MGP Medium (Cat. no. Z225). No yellow color change along the stab line is indicative of a negative MGP test.

### MGP, Rapid (VRE)

Rapid enzymatic test to assist in identification of vancomycin resistant enterococci (VRE). It rules out non-pathogens *Enterococcus casseliflavus* and *Enterococcus gallinarum*.  
20 tubes/pk.....Z225

### Micrococcus

See *Lysostaphin*

### Staph ID Panel

For the identification of *Staphylococcus* species.  
20 tests/kit.....MID69

### Strep-ID Panel

For identification of *Streptococci* and *Enterococci*.  
20 tests/kit.....MID62

### Mineral Oil

Heavy mineral oil for biochemical tests that require oil overlays.  
15ml, each.....Z79  
150ml, each.....Z80

### Moraxella catarrhalis

See *CatScreen™* and *CarboFerm™*

### MOT Disks

MOT disks provide the tests ONPG, Tryptophan or Indole, and MUG, which can identify approximately 80% of the *Enterobacteriaceae*.  
50 disks/pk.....K9101

### MRSA, PBP2'

A rapid latex agglutination assay, detecting PBP2' (also called PBP2a), in isolates of *Staphylococcus*, as an aid in identifying methicillin-resistant *Staphylococcus aureus* (MRSA).  
25 tests.....DR900A

### MucoGest™ 50

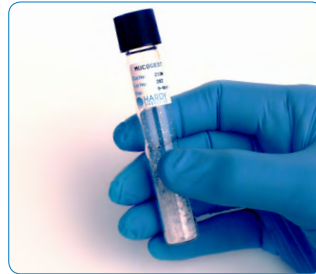
A dithiothreitol digestant for the preparation of AFB and mycology sputum specimens; 0.25gm, makes 50ml.  
20 tubes/pk.....Z130

### MucoGest™ 100

A dithiothreitol digestant for the preparation of AFB and mycology sputum specimens, 0.5gm.  
20 tubes/pk, makes 100ml .....Z131



**MRSA Latex Test Kit,**  
Cat. no. DR8900A



**Mucogest™ 50,** Cat. no. Z130

### MUG Disks

Recommended for the identification of glucuronidase activity in *E. coli* by fluorescence, under a long-wave (365nm) UV light source.  
25 disks.....Z17

### Mycobacteria

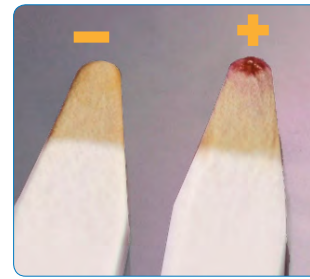
See *TB Prep Kit™*, *MucoGest™*, and *TB Prep Kit, Red™*

### NALC

(N-Acetyl-L-Cysteine)  
A digestant specimen preparation for AFB culture. For use with TB Digestant, Cat. no. X45, sold separately.  
20x250mg.....Z60  
20x2.5gm.....Z161

### Neisseria

See *CarboFerm™* and *Wee-Tab Neisseria Screen Test*



**Nitrocef Matchbook™** sticks, Cat. no. Z108. Showing negative [Left-*Staphylococcus aureus* (ATCC® 25923)] and positive [Right-*Haemophilus influenzae* (ATCC® 33533)].

### Ninhydrin

Color developer in alcohol for the hippurate hydrolysis test.  
15ml, each.....Z70

### Nitrate Reagent A

(Sulfanilimide, 0.2%)  
For AFB nitrate test.  
15ml, each.....Z124

Sulfanilic acid for nitrate reduction test, compatible with strip/cupule tests.  
15ml, each.....Z71

### Nitrate Reagent B

(Naphthylethylenediamine, 0.1%)  
For AFB nitrate test  
15ml, each.....Z125  
Naphthylamine for nitrate reduction test, compatible with strip/cupule tests.  
15ml, each.....Z72

### Nitrate Reagent C

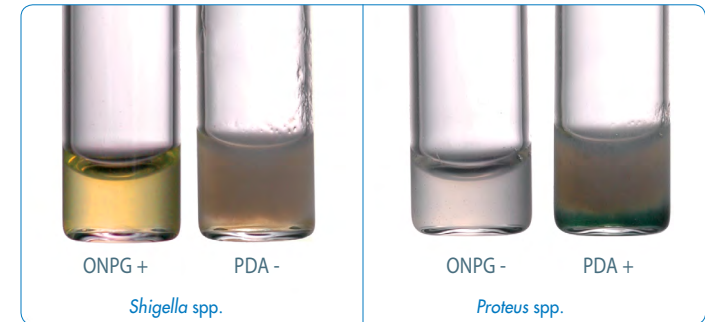
Zinc for nitrate reduction test.  
5gm, each.....Z73

### Nitrate Reagent A, Anaerobic

Sulfanilic acid for nitrate reduction test.  
15ml, each.....Z134

### Nitrate Reagent B, Anaerobic

Cleve's Acid for nitrate reduction test.  
15ml, each.....Z135



**ONPG-PDA Test,** Cat. no. R93, for the rapid screening of *Salmonella* and *Shigella*. A single tube test takes one to two hours, and quickly rules out *Proteus*.



Novobiocin-sensitive *Staphylococcus epidermidis* (ATCC® 12228) inhibition zone around a HardyDisk™ Novobiocin Differentiation Disk, Cat. no. Z7291.

### Nitrate, HardyDisks™

A disk for the determination of nitrate reduction by anaerobes.  
50 disks/cartridge.....Z7071

### Nitrocef, Matchbook™

A nitrocef (chromogenic) test for beta-lactamase activity in *Neisseria*, *Moraxella*, *Staphylococcus*, *Haemophilus*, *Enterococcus*, and some anaerobes; Matchbook™ format.  
10 test strips.....Z108

### Nitrocef, HardyDisks™

A nitrocef (chromogenic) test for beta-lactamase activity in bacteria; disk format.  
50 disks/vial.....Z7301

### Nocardia Hydrolysis Kit

Each kit contains five Xanthine, Hypoxanthine, Casein, and Tyrosine tubes; 20 tubes total.  
5 complete tests.....Z604

### Novobiocin HardyDisks™, 5µg

For the identification of *Staphylococcus saprophyticus*.  
50 disks/vial.....Z7291

### O129 Disks

For the differentiation of *Vibrio* spp. from other Gram-negative rods.  
150µg, 50 disks/cartridge.....DD15

### ONPG HardyDisks™

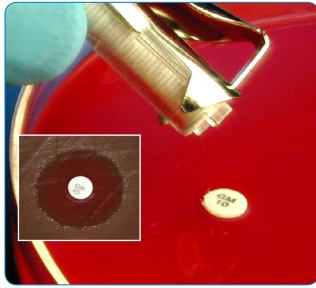
For the detection of galactosidase in slow lactose fermenters.  
50 disks/cartridge.....Z7321

### ONPG-PDA

A rapid combination test screening tube to rule out *Salmonella* and *Shigella* based on beta-D-galactidase, and phenylalanine deaminase activity. Requires Ferric Chloride reagent, Cat. no. Z63.  
Two tests in one tube, 0.5ml, 13x100mm tube,  
20 tests/pk .....R93



**OxiStrips™ Oxidase Test**  
Cat. no. Z93.



**Streptococcus pneumoniae** (ATCC® 6305) growing around a HardyDisk™ Optochin Differentiation Disk, Cat. no. Z7011 on Blood Agar, Cat. no. A10.



**Rapid Ornithine,**  
Cat. no. K279

Left: *Staphylococcus lugdunensis* positive reaction at four hours.

Right: *Staphylococcus epidermidis* negative reaction at four hours.

### Optochin, HardyDisks™

A disk for the differentiation of alpha-hemolytic *Streptococcus pneumoniae*, (P disk).  
1x50 disks .....Z7011  
5x50 disks/cartridge.....Z7015

### Ornithine, Rapid

Detects ornithine decarboxylase activity in as little as two hours. This test will assist in the identification of *Enterobacteriaceae* and *Staphylococcus lugdunensis*.  
0.5ml fill, 20/pk.....Z119

### OxiDrops™ Oxidase

A sensitive, ready-to-use liquid reagent for the detection of cytochrome oxidase activity. Use with filter paper, Cat. no. 28310048.  
7ml, each.....Z119

### OxiStrips™ Oxidase

Paper strips for testing the oxidase reaction. Contains tetramethyl oxidase reagent, high sensitivity. Stabilized for long shelf life.  
25 strips .....Z93

### Potassium Hydroxide

See KOH

### Proteus

See ONPG-PDA and Urea PDA disk

### PYR

A rapid three minute test for Group A strep, *Staphylococcus lugdunensis*, and enterococci, complete kit.  
25 tests.....Z75  
75 tests (card format).....Z275  
100 tests.....Z175

### Pyridoxal Disks

For the growth of nutritionally deficient streptococci.  
25 disks/vial.....DP9625

### QuickVue+ Strep A Test

For the qualitative detection of Group A Streptococcal antigen directly from throat swabs, by Quidel. Immunoassay for the rapid qualitative detection of Group A Streptococcal antigen from throat swab specimens.  
25 tests.....Z0122

### QuickVue, Chlamydia

A rapid EIA test for Chlamydia antigen. Immunoassays for the direct qualitative detection of *Chlamydia trachomatis* antigen from endocervical swab of cytology brush specimens.  
25 tests/kit.....B006

### Rapid Anginosus

For the rapid identification of the *Streptococcus anginosus* group (formerly *Streptococcus milleri*) by detection of arginine decarboxylase activity and the production of acetoin (MRVP).  
10 tests/kit.....Z14

### RSU Broth

A rapid sucrose and urea test for the presumptive identification of *Corynebacterium jeikeium*.  
10 tests.....Z53

### Salmonella Latex

A rapid latex slide agglutination test for the presumptive identification of *Salmonella* spp. isolates taken directly from selective agars. Detects motile and non-motile strains.  
50 tests/kit.....M42

### Sodium Carbonate, 2N

Developer solution for Arylsulfatase Broth, Cat. no. K93 and K94.  
15ml, each.....Z102

### SoluPhyte™

Contains KOH and DMSO for rapid dissolution of epithelial cells in fungal wet mount preparations without the need for heating.  
5ml, each .....Z178

### SPS HardyDisks™

Sodium Polyanethol Sulfonate for presumptive identification of *Peptostreptococcus anaerobius*.  
50 disks/cartridge .....Z7381

### StaphTEX™ Blue Latex

A rapid latex test kit for *Staphylococcus aureus*, including MRSA. Blue latex on a white reaction card; controls included.  
50 test kit.....ST50  
200 test kit.....ST200

### Staphylococcus

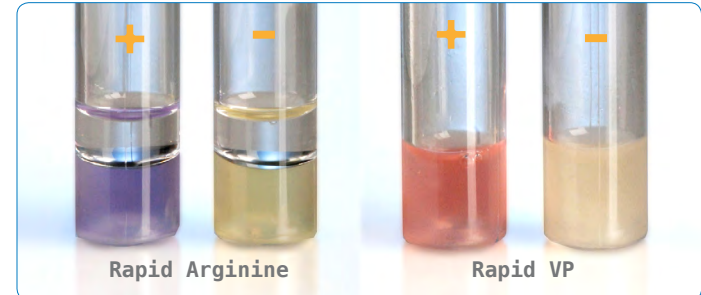
See Catalase Test, 3%, Coagulase Cryo™, Coagu-Staph™, Novobiocin, Lysostaphin, PYR, Rapid Ornithine, StaphTEX™, and SET-RPLA

### NEW Card Format!



PYR Test Kit, Cat. no. Z75, Z175 and Z275

### Rapid Anginosus Kit, Cat. no. Z14



Left: *Streptococcus anginosus* positive for arginine (purple) at four hours.  
Right: *Streptococcus salivarius* negative arginine (yellow) at four hours.

Left: Rapid VP *Streptococcus anginosus* positive VP (red) at four hours.  
Right: *Streptococcus agalactiae* negative VP (yellow) at four hours.



Top: *Escherichia coli* (ATCC® 25922) applied to filter paper moistened with OxiDrop™, Cat. no. Z119 reagent. No development of a blue/purple color within 10–20 seconds was indicative of a negative oxidase test.

Bottom: *Pseudomonas aeruginosa* (ATCC® 27853) applied to filter paper moistened with OxiDrop™, Cat. no. Z119 reagent. The development of a blue/purple color within 10–20 seconds was indicative of a positive oxidase test.

## Strep B Carrot Broth

A new one-step method for cultivation and identification of hemolytic strains of Group B *Streptococcus*. This test is an improvement over conventional methods, by increasing sensitivity it decreases turn around time, and lowers overall cost. Positive results for beta hemolytic strains can be observed in as early as 6 hours after inoculation. Non-hemolytic strains can be tested on Hardy's GBS Detect plate. See Z140T if extra tiles are needed.

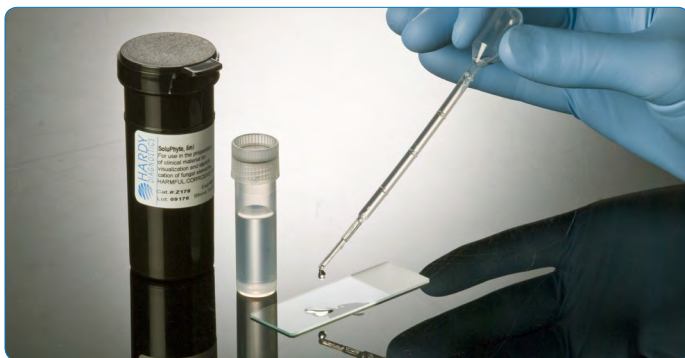
20 tests..... Z140  
 100 tests, use with Innova® automation..... Z146BX  
 100 tubes/box, use with Copan WASP™ automation..... Z144BX

\*US Patent No. 8,313,938 B1 and  
 US Patent No. 8,518,688 B1

## TOP SELLER!



Strep B Carrot Broth™,  
 Cat. no. Z40



SoLuPhyte™, Cat. no. Z178



StaphTEX™ Blue Kit, Cat. no. ST50 and ST200



StrepPRO™ Grouping Latex  
 Agglutination Kit

Contains hard to find  
 Group D latex!



TB Prep Kit, Cat. no. Z158

## StrepPRO™ Grouping Kit

A latex agglutination test for the rapid identification of beta hemolytic streps; Group A, B, C, D, F, and G. Contains all reagents and reaction cards to perform.

60 tests..... PL030HD

## StrepPRO™ Grouping Reagents

Replacement reagents for the StrepPRO™ Grouping Kit.

Group A, 60 tests ..... PL031HD  
 Group B, 60 tests ..... PL032HD  
 Group C, 60 tests ..... PL033HD  
 Group D, 60 tests ..... PL034HD  
 Group F, 60 tests ..... PL035HD  
 Group G, 60 tests ..... PL036HD

## StrepPRO™ Extraction Reagents

Extraction reagents for the StrepPRO™ Grouping Kit.

60 tests:  
 Extraction 1 ..... PL037HD  
 Extraction 2 ..... PL038HD  
 Extraction 3 ..... PL039HD

## StrepPRO™ Positive Control

Positive Control for the StrepPRO™ Grouping Kit.

60 tests..... PL040HD

## StrepPRO™ Latex Reaction Cards

Latex reaction cards for StrepPRO™ Grouping Kit.

10 wells x 48 cards  
 per pack..... PL092HD



StrepQuick™, Cat. no. Z122

## StrepQuick™

Rapid test kit for Gram-positive, catalase-negative cocci; performs LAP, Esculin, and PYR tests on one card. Helpful for identification of *Streptococcus*, *Aerococcus*, *Enterococcus*, *Gemella*, *Leuconostoc*, and *Pediococcus*.

25 tests..... Z122

## Streptomycin Disks

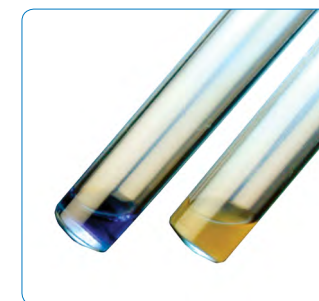
For the detection of high level resistance to aminoglycosides by enterococci, 300µg.  
 50 disks/cartridge..... Z31694

## Sudan Black IV

Fecal fat stain.  
 15ml, each..... Z83

## Sulfonamide Disks

A disk test to aid in the identification of *Gardnerella vaginalis*.  
 1000µg,  
 50 disks/cartridge..... DD11



Trehalose Broth, Rapid  
 Cat. no. Z205

## TB Base Digestant

For the digestion and decontamination of specimens for AFB culture (use with NALC, Cat. no. Z60, Z61, Z63, sold separately).

50ml, 25/pk..... X45  
 100ml, 12/pk..... U22  
 500ml, each ..... U20

## TB Niacin Test Strips

Differentiates *Mycobacterium* species on the basis of niacin production.  
 25 strips/pk..... R21090

## TB Prep Red™

This kit takes the guesswork out of decontamination and digestion of specimens for the recovery of *Mycobacterium* spp. Each TB Prep Kit Red™ contains all of the necessary reagents for the decontamination and digestion of specimens, plus a pH indicator.  
 5 tests..... Z158

## Trehalose Broth, Rapid

A rapid screening method to aid in the detection of *Candida (Torulopsis) glabrata*, with results in 3 hours.  
 10 tubes/box..... Z205



**Urea/PDA HardyDisks™**  
*Proteus mirabilis* suspended in 0.3ml of saline with a Urea/PDA HardyDisks™, Cat. no. Z7331. The pink to red color development represents a positive test for urea hydrolysis.

### Tween® 80

General purpose reagent.  
100ml, each.....U180

### Urea Disks

For the detection of urease activity in *Helicobacter*, *Proteus*, etc.  
25 disks/vial .....DU7525

### Urease Test Tablets

Each tablet contains 10mg. of urea. Urease test tablets require preliminary growth on certain culture media. The following items are required but not provided:

- Plastic test tubes
  - Loop for harvesting colonies
  - Distilled water, neutral pH
- 10mg of urea/50bx.....K650



Showing Vancomycin Resistance. *Bacteroides fragilis* (ATCC® 25285) growing on Brucella Agar with Hemin and Vitamin K, Cat. no. A30, with a Vancomycin disk, Cat. no. Z7501.

### Urea Medium, Rapid

For the detection of urease activity in *Helicobacter pylori* and other organisms (media can be used for the diagnosis of *Helicobacter pylori* in biopsy specimens).

10 tests..... Z54  
13x100mm tube, 3ml fill,  
20/pk ..... R154

### Vancomycin, 5µg, HardyDisks™

For the differentiation of anaerobic bacteria based on susceptibility to vancomycin.  
50 disks/cartridge.....Z7501

### Voges-Proskauer, Rapid

For the rapid detection of acetylmethylcarbinol (acetoin) in Gram-negative bacteria.  
13x100mm tube, 20/pk....R14

### Voges-Proskauer, Reagent A

Alpha naphthol, 5%, for VP test. Compatible with strip, or cupule tests.  
15ml, each..... Z91



*Proteus mirabilis* in Urea Medium, Rapid, Cat. no. Z54. The pink-red color development is indicative of a positive urease reaction.

### Voges-Proskauer, Reagent B

Potassium hydroxide (KOH) 40%, for VP test. Compatible with strip, or cupule tests.  
15ml, each.....Z92

### Vibrio

See O129 Disks and VET-RPLA

### V Factor, HardyDisks™

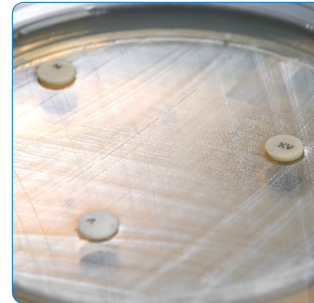
NAD disk to aid in the identification of *Haemophilus* spp.  
50 disks/cartridge.....Z7041

### Voges-Proskauer, Rapid

For the rapid detection of acetylmethylcarbinol (acetoin) in Gram-negative bacteria.  
0.5ml, 13x100mm tube,  
20/pk..... R14

### Wee-Tab™ Neisseria Screen

For *Neisseria* speciation within 30 minutes using enzymes that produce a color change.  
26 tests/vial.....K9187



**XV-Factor Disks:** Growth of *Haemophilus influenzae* around the XV-Factor Disk, Cat. no. Z7051. This growth pattern demonstrates the inability of the organism to grow in the absence of either V-Factor or X-Factor and is consistent with *H. influenzae*.

### X Factor, HardyDisks™

Hemin disk to aid in the identification of *Haemophilus* spp.  
50 disks/cartridge.....Z7031

### XV Factor, HardyDisks™

Hemin and NAD disk to aid in the identification of *Haemophilus* spp.  
50 disks/cartridge.....Z7051

### Yersinia Selective Agar Base

Hardy Diagnostics CRITERION™ *Yersinia* Selective Agar (CIN) Base is recommended for use in the isolation and differentiation of *Yersinia* and *Aeromonas* species from clinical specimens, environmental samples, and food sources. *Yersinia* Antimicrobial Supplement CN, product #231961, is required for this medium.  
500gm wide-mouth bottle.....C5391

## Identification Panel

### Gram Negative

These accurate, easy-to-use identification panels are ideal for food, environmental, clinical, and pharmaceutical laboratories. Presented in convenient microwell format, these panels provide a flexible identification platform.

- Convenient substrate identification system for commonly encountered bacteria
- Results in as little as 24 hours
- Vivid color reactions for easy read-out
- No additional equipment is required
- Simple inoculation procedure
- Identification software included

### Gram Negative Bacteria ID

Panel A, AOAC approved. Identifies the most common bacteria isolates.  
60 tests/kit.....MID64  
160 tests/kit.....MID641

### Listeria ID Panel

An extended battery of tests to assist in identifying the more esoteric bacterial isolates.  
20 tests/kit.....MID67

### Bacillus ID Panel

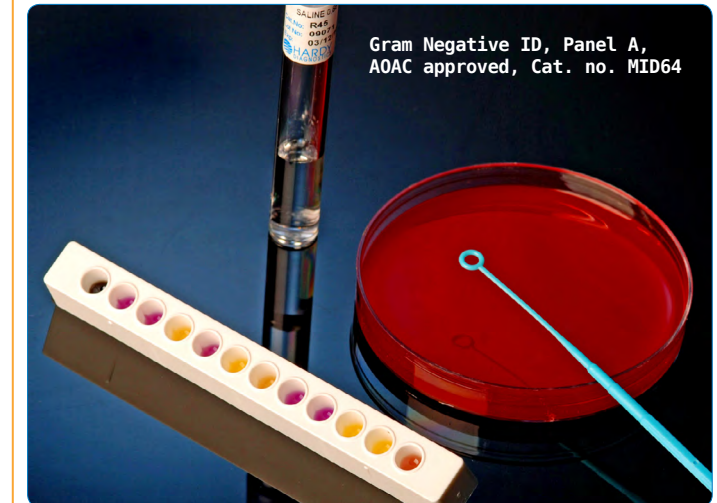
For the identification of *Bacillus* spp. and related genera.  
20 tests/kit..... MID66

### Staph ID Panel

For the identification of *Staphylococcus* species.  
20 tests/kit.....MID69

### Strept-ID Panel

For identification of Streptococci and Enterococci.  
20 tests/kit.....MID62



Gram Negative ID, Panel A, AOAC approved, Cat. no. MID64





*A Culture of Service™*

1430 West McCoy Lane

Santa Maria, CA 93455

[www.HardyDiagnostics.com](http://www.HardyDiagnostics.com) | [Sales@HardyDiagnostics.com](mailto:Sales@HardyDiagnostics.com)

Distribution Centers: California | Washington | Utah | Arizona

Ohio | Texas | New York | Florida | North Carolina