


**Strep B
carrot
broth™ kit** &
GBS Detect™

HARDY
DIAGNOSTICS
A Culture of Service™



 Online Ordering Available

Fast

*New color change
method for cultivation
and identification of
beta-hemolytic strains of
Group B Streptococcus!*



Copyright 2016, Hardy Diagnostics

Strep B carrot broth™ kit

Strep B Carrot Broth™ kit is a color change method for cultivation and identification of beta-hemolytic group B *Streptococcus* from clinical specimens, especially for pregnant women. This screening test is an improvement over conventional methods, by increasing sensitivity, decreasing turn-around-time, and lowering labor and material cost. Positives require no follow-up testing!

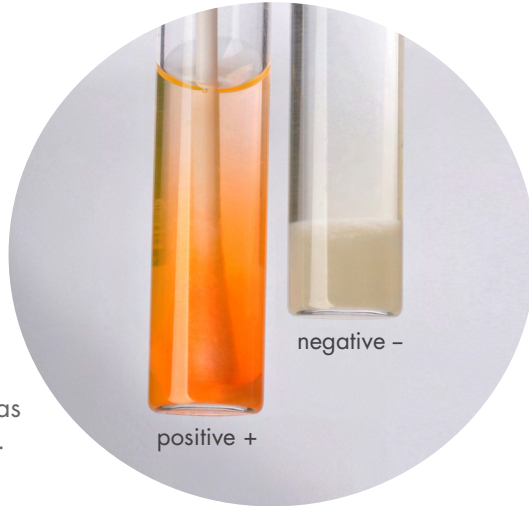


US Patent No. 8,313,938 B1
US Patent No. 8,518,688 B1

Advantages of Strep B Carrot Broth™

Strep B carrot broth™ kit

- Easy read-out. If an orange to red color develops, Strep B is present.
- Positive results can be reported in as early as 16 hours after inoculation.
- For positives, there is no need for further subculturing or testing.
- Lower cost when compared to the LIM Broth method.
- Proven - Visit our website at www.HardyDiagnostics.com/carrotbroth.htm or scan the QR code to review the scientific studies on Carrot Broth™ media.
- Carrot Broth™ media was found to be more sensitive than the LIM Broth, Granada Agar Plate methods*, and even PCR!**
- Negative cultures from Strep B Carrot Broth™ can be subbed to a GBS Detect™ plate, Cat. no. A300, to easily find non-hemolytic strains of GBS (see description on next page).



- Can be used with liquid and gel-based transport systems.
- Positive cultures can be held at room temperature for up to 13 days in case susceptibility tests are ordered.
- Carrot Broth™ media is available in multiple formats that work on many automated inoculating machines.

*A multi-center clinical study by Schreckenberger et al., found the sensitivity of Carrot Broth™ to exceed that of LIM Broth method (97% vs. media 93%). Poster presented at the 2005 ASM General Meeting, Atlanta, GA.

In house study showed a sensitivity of 99% at 102 CFU/ml and specificity of 100%. Data available upon request.

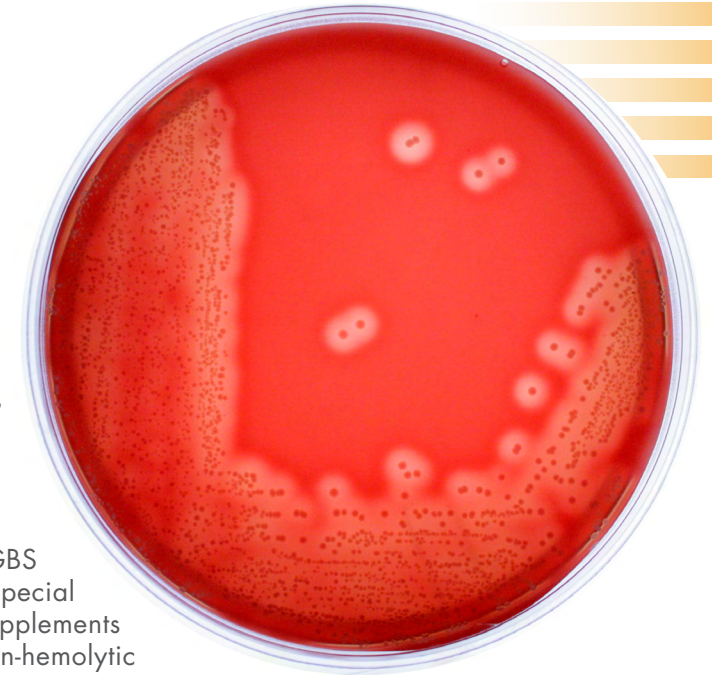
**Schreckenberger, P. "Comparison of Real-Time PCR with Standard LIM Broth and Carrot Broth™ for the Detection of group B Strep" poster at ASM 2006, Orlando, Florida.

US Patent No. 8,313,938 B1 and US Patent No. 8,518,688 B1

GBS Detect for Non-Hemolytic Strains

GBS Detect™

GBS Detect™ plate is recommended for the isolation and detection of non-hemolytic group B streptococci by inducing beta-hemolysis upon subculture from enrichment broth procedures such as StrepB Carrot Broth™ media and LIM Broth. GBS Detect™ plates contain special hemolysis enhancing supplements that cause otherwise non-hemolytic strains of GBS to appear as beta-hemolytic, thus increasing the sensitivity of methods used to detect GBS colonization.



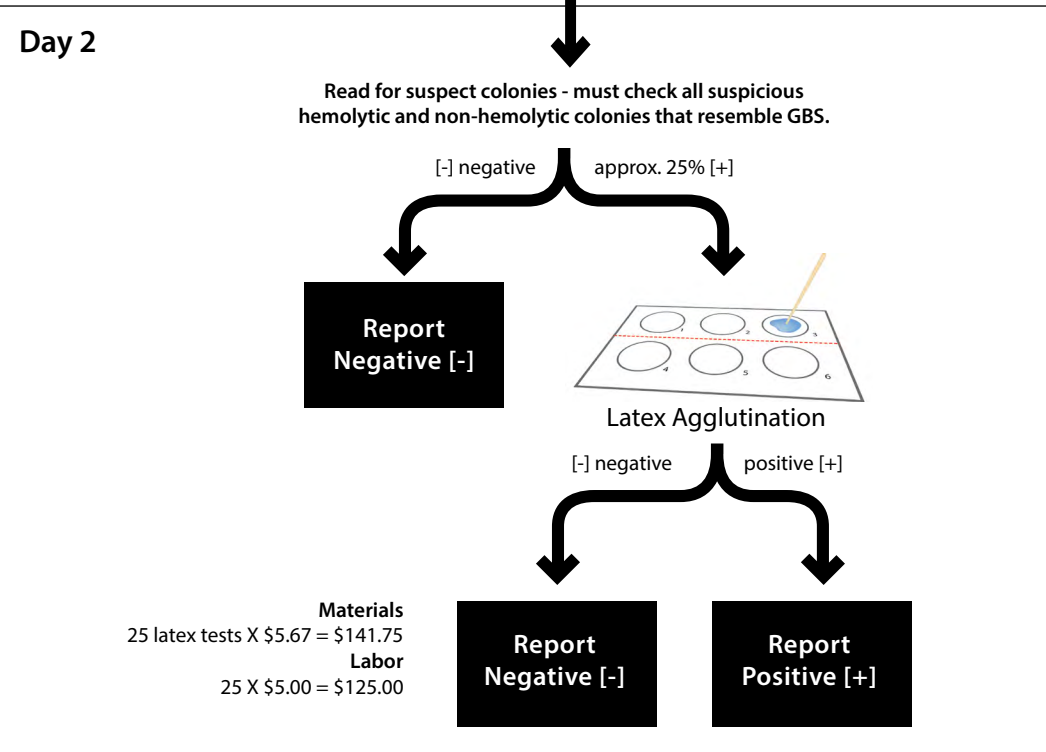
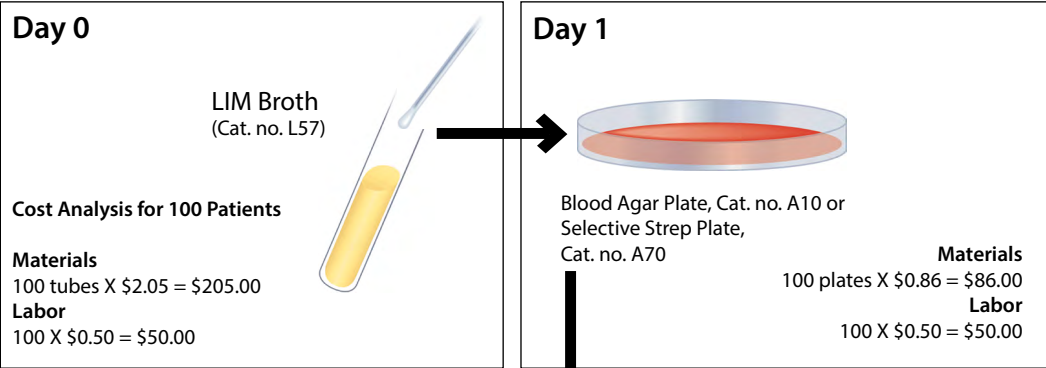
A perfect companion product to Carrot Broth™ kit (Cat. No. Z140) which does not detect non-hemolytic strains.

Strep B Carrot Broth™ 20 tests	Z140
GBS Detect™ 15x100mm plate, 10/pk	A300
GBS Detect™ 15x100mm plate, 100/bx	A300BX

Call technical support for assistance 800.266.2222.

Call Hardy Diagnostics at 800.266.2222 for a free sample to evaluate in your laboratory.

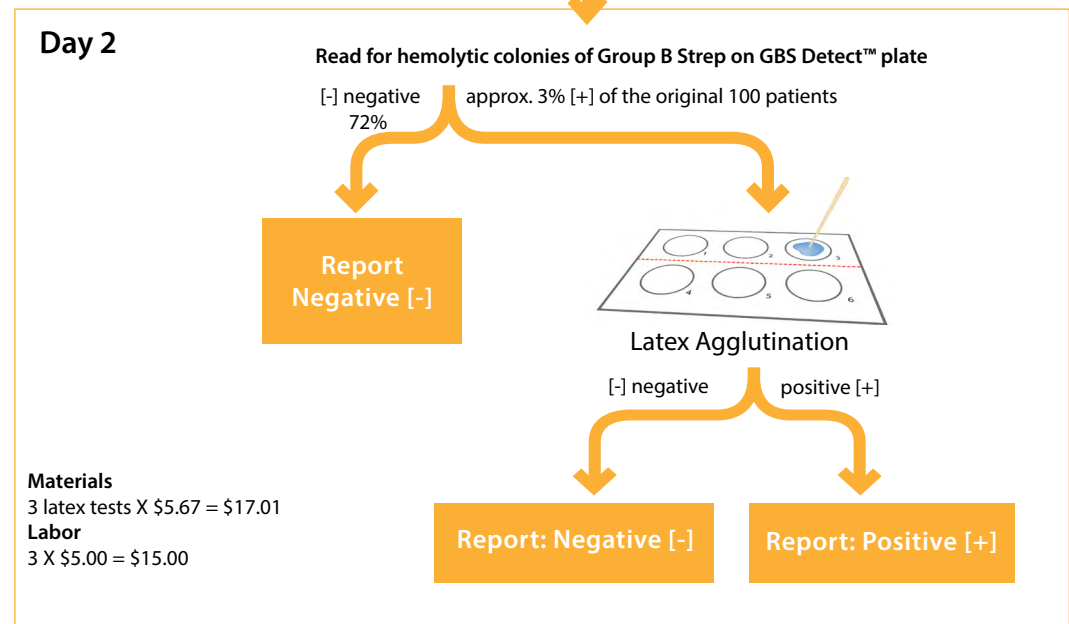
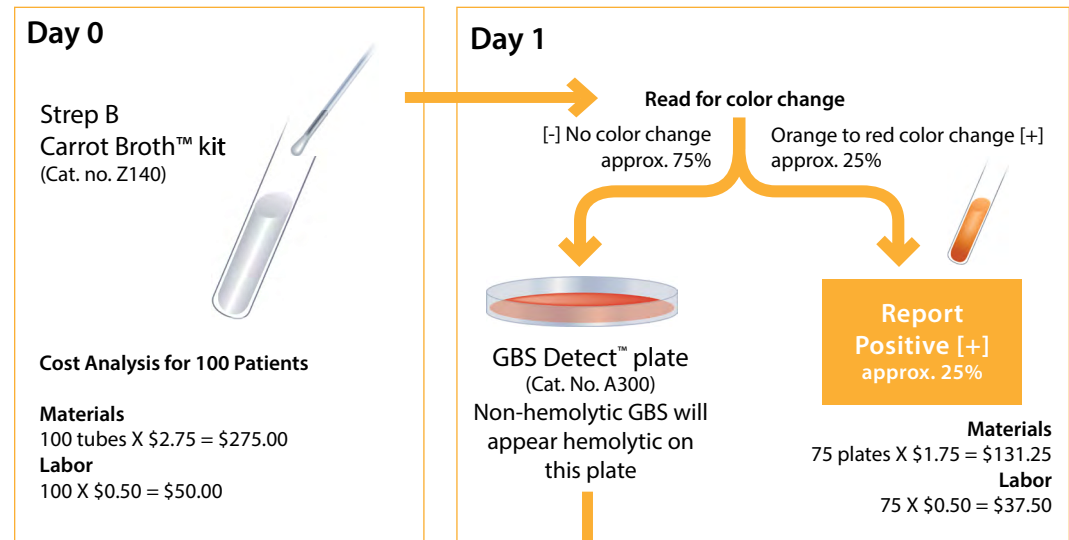
LIM Broth Method



Total Cost for 100 Patients: **\$657.75***

*Assuming: labor at \$30.00/hr; the inoculation and processing of one tube or plate of media takes 60 seconds; latex agglutination takes approximately 10 minutes; 25% of all patient specimens will be positive for hemolytic group B streptococcus, and 3% of all specimens will be non-hemolytic group B streptococcus.

Strep B Carrot Broth™ Method



Report most positives within one day!

Total Cost for 100 Patients: **\$525.76***
Strep B Carrot Broth™ kit reduces your cost by 20%!



HARDY
DIAGNOSTICS

A Culture of Service™

1430 West McCoy Lane
Santa Maria, CA 93455

Website: www.HardyDiagnostics.com | Email: Sales@HardyDiagnostics.com
California | Washington | Utah | Arizona | Ohio | Texas | New York | Florida

